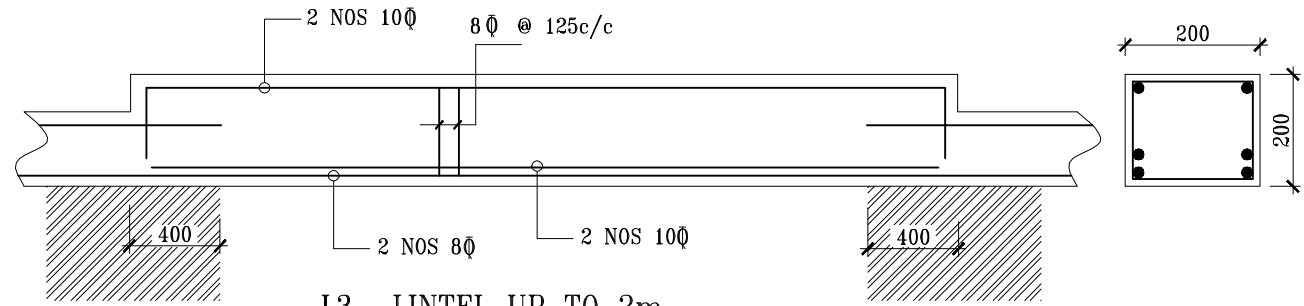
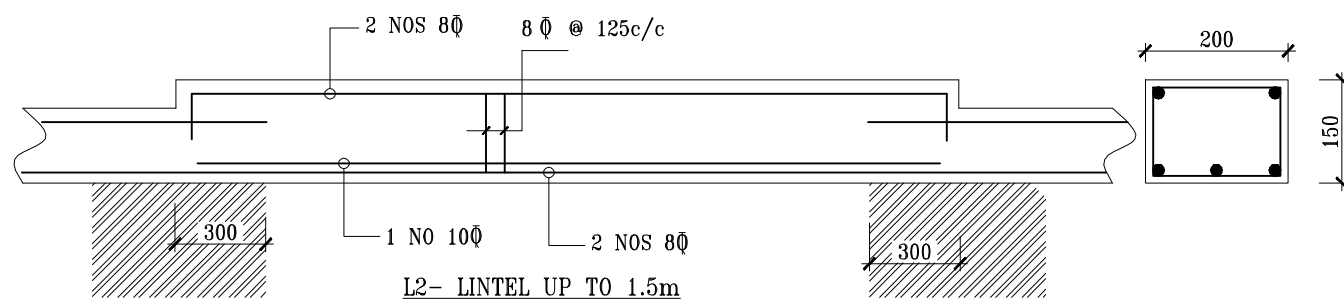


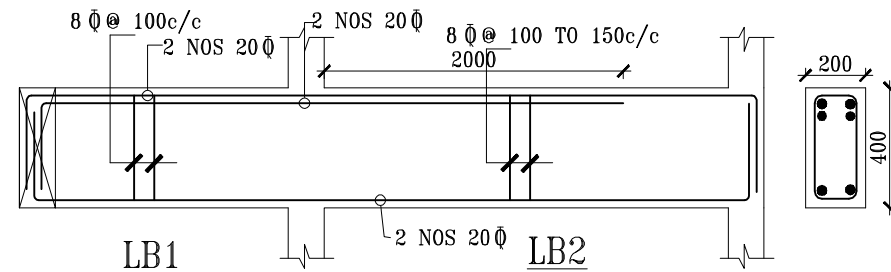
L1- LINTEL AROUND UP TO 1m



L3- LINTEL UP TO 2m

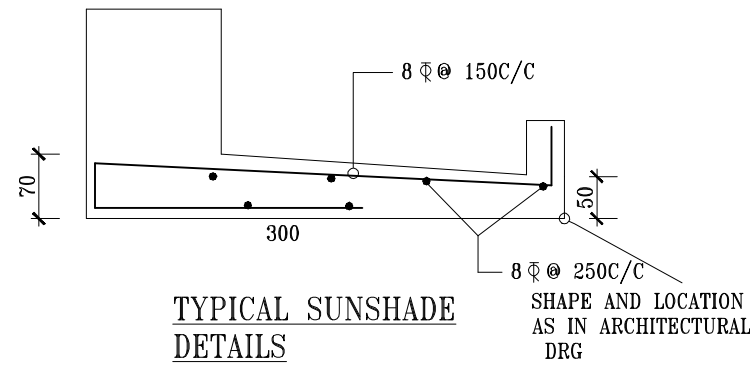


L2- LINTEL UP TO 1.5m

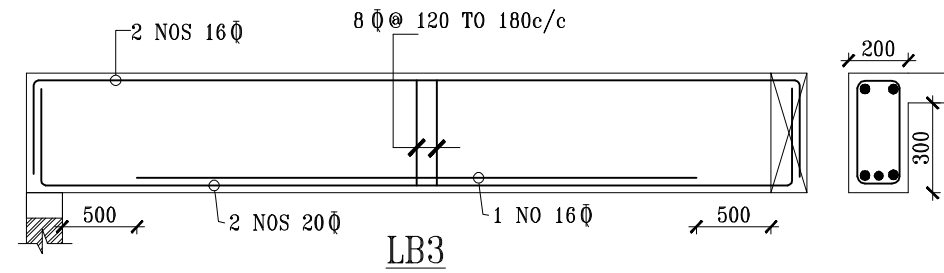


LB1

LB2



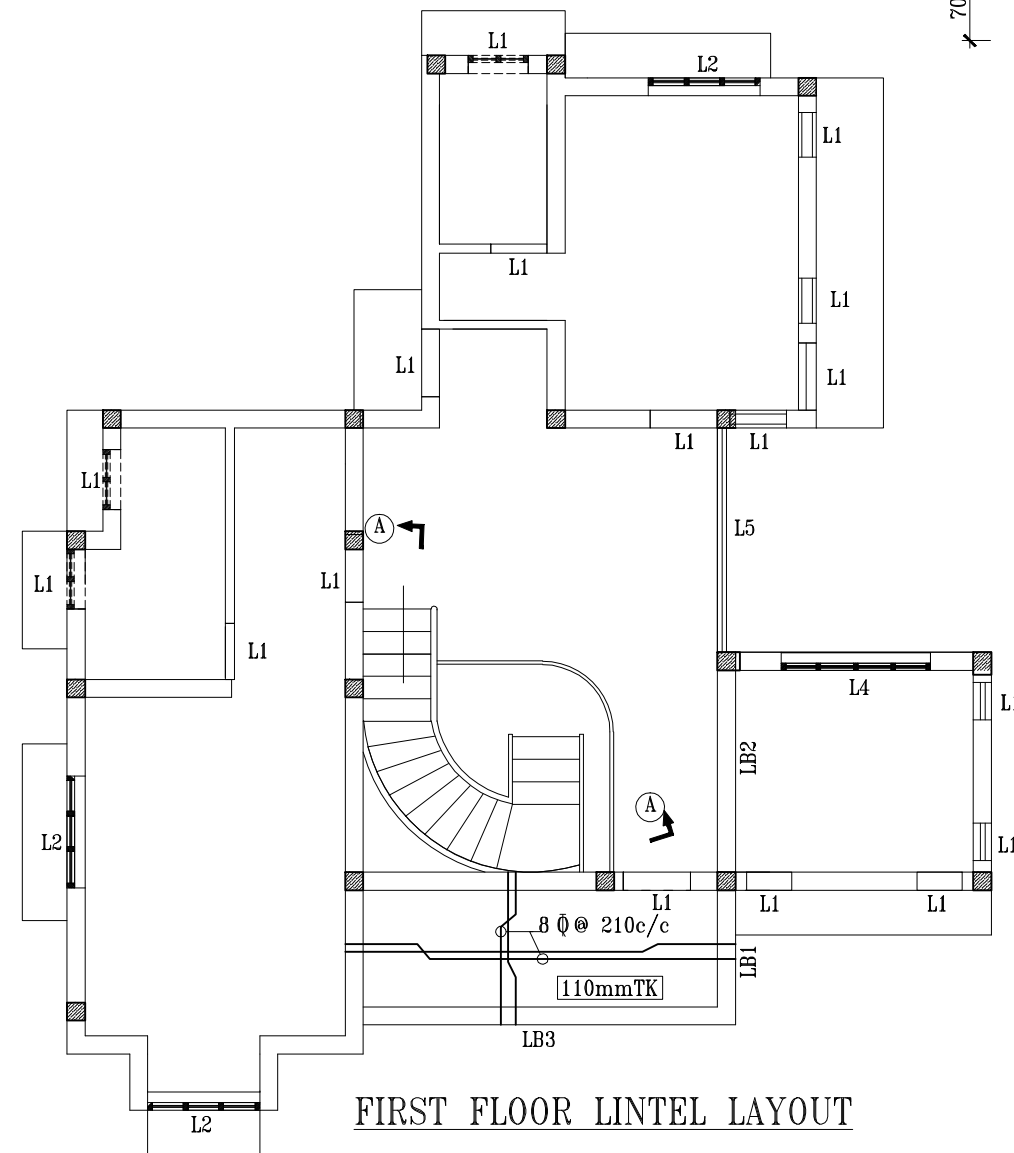
TYPICAL SUNSHADE DETAILS



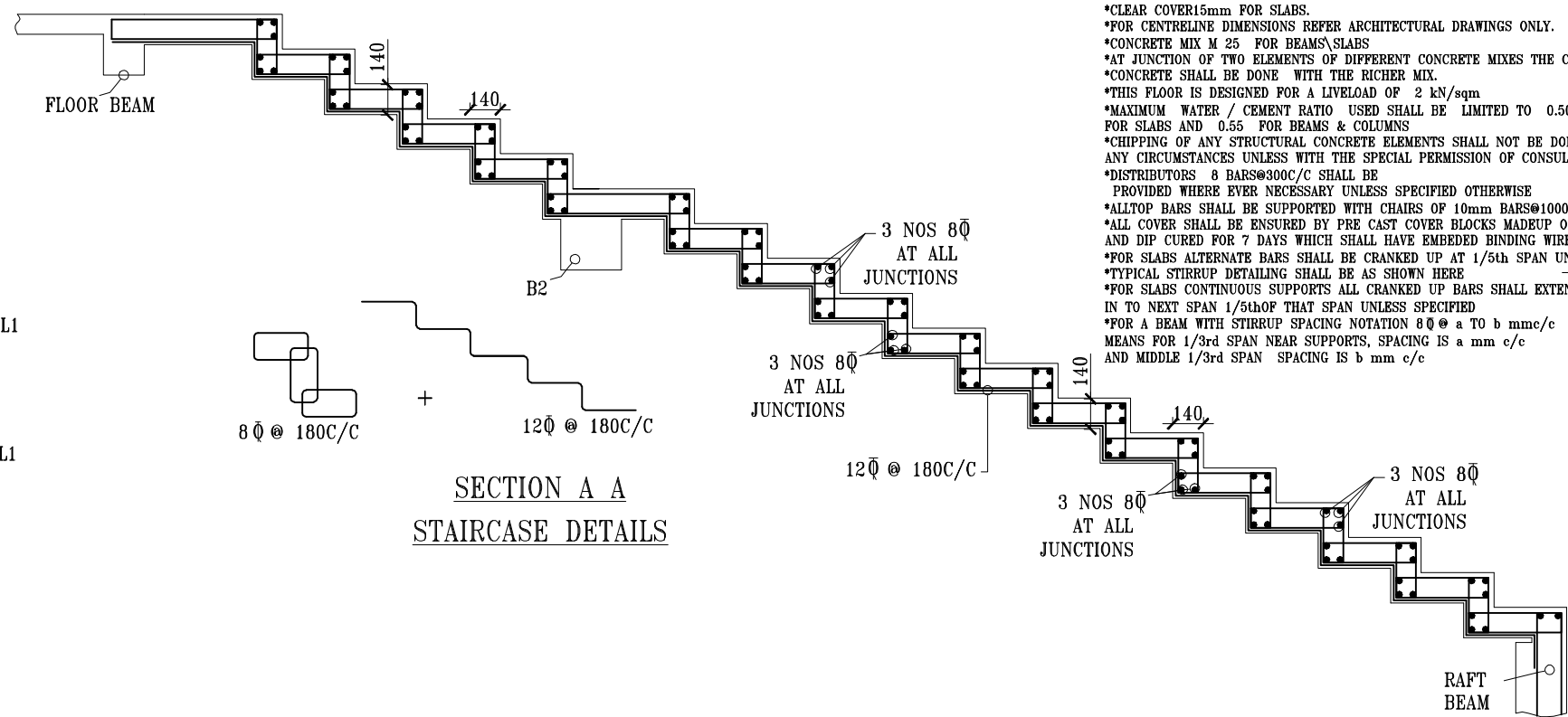
LB3

NOTES

- *DRAWINGS WILL BE ISSUED IN DIGITAL FORM / HARD COPIES FOR REVIEW / TENDER / ESTIMATE PURPOSES. HOWEVER ONLY HARD COPIES SEALED / SIGNED BY THE DESIGNER SHALL BE USED FOR THE CONSTRUCTION.
- *ALL DIMENSIONS ARE IN MILLIMETRES UNLESS SPECIFIED OTHERWISE.
- *DIMENSIONS SHALL NOT BE SCALED OFF THIS DRAWING
- WHEN IN DOUBT, DONT MEASURE THE DRAWING, DONT ASSUME ANY THING BUT ASK US(0484)2203098
- *STEEL GRADE Fe 500 FOR ALL BARS
- *ALL LAPS ARE 55 TIMES DIA OF BAR
- *CLEAR COVER 15mm FOR SLABS.
- *FOR CENTRELINE DIMENSIONS REFER ARCHITECTURAL DRAWINGS ONLY.
- *CONCRETE MIX M 25 FOR BEAMS,SLABS
- *AT JUNCTION OF TWO ELEMENTS OF DIFFERENT CONCRETE MIXES THE COMMON CONCRETE SHALL BE DONE WITH THE RICHER MIX.
- *THIS FLOOR IS DESIGNED FOR A LIVELOAD OF 2 kN/sqm
- *MAXIMUM WATER / CEMENT RATIO USED SHALL BE LIMITED TO 0.50 FOR SLABS AND 0.55 FOR BEAMS & COLUMNS
- *CHIPPING OF ANY STRUCTURAL CONCRETE ELEMENTS SHALL NOT BE DONE IN ANY CIRCUMSTANCES UNLESS WITH THE SPECIAL PERMISSION OF CONSULTANTS
- *DISTRIBUTORS 8 BARS@300C/C SHALL BE PROVIDED WHERE EVER NECESSARY UNLESS SPECIFIED OTHERWISE
- *ALLTOP BARS SHALL BE SUPPORTED WITH CHAIRS OF 10mm BARS@1000mmC/C
- *ALL COVER SHALL BE ENSURED BY PRE CAST COVER BLOCKS MADEUP OF CM 1:3 AND DIP CURED FOR 7 DAYS WHICH SHALL HAVE EMBEDDED BINDING WIRES FOR TYING THEM
- *FOR SLABS ALTERNATE BARS SHALL BE CRANKED UP AT 1/5th SPAN UNLESS SPECIFIED
- *TYPICAL STIRRUP DETAILING SHALL BE AS SHOWN HERE
- *FOR SLABS CONTINUOUS SUPPORTS ALL CRANKED UP BARS SHALL EXTEND IN TO NEXT SPAN 1/5thOF THAT SPAN UNLESS SPECIFIED
- *FOR A BEAM WITH STIRRUP SPACING NOTATION 8Ø @ a TO b mmc/c MEANS FOR 1/3rd SPAN NEAR SUPPORTS, SPACING IS a mm c/c AND MIDDLE 1/3rd SPAN SPACING IS b mm c/c



FIRST FLOOR LINTEL LAYOUT



SECTION A A STAIRCASE DETAILS