



Pure TMT Bars

Andar se Pure
Saalon-Saal Sure



CERTIFIED

About JSW Steel



JSW Steel: India's Steelmaking Powerhouse

JSW Steel stands among India's largest steel producers, with an annual capacity of 35.7 million tonnes—including 1.5 million tonnes in the USA. Our flagship Vijayanagar plant in Karnataka is the country's single-largest facility, capable of churning out 17.5 million tonnes of high-quality steel.

Renowned globally, JSW Steel ranks eighth in the World-Class Steelmaker Rankings by World Steel Dynamics, a testament to our operational excellence and commitment to quality. We serve customers in over 100 countries, supplying steel for everything from sturdy infrastructure and sleek automobiles to reliable home appliances.

Innovation and sustainability drive every aspect of our business. As a ResponsibleSteel™-certified producer with a strategic partnership with Japan's JFE Steel, we develop premium-grade steels that meet tomorrow's demands. Aligned with India's climate goals under the Paris Accord, JSW Steel is building a stronger, greener future you can trust.

JSW Steel is part of US\$24 billion JSW Group, one of India's leading business houses with interests in steel, energy, cement, paints, infrastructure, realty, green mobility, and more.

\$24
billion

**Capacity of 35.7
MTPA including 1.5
MTPA in US**



About JSW Neosteel Fe 550D

“

When it comes to building your dream home, nothing should be left to chance. That's why millions of homeowners across India trust JSW Neosteel TMT Bars – a name synonymous with strength, quality, and reliability. Made using pure iron ore via the advanced blast furnace route, JSW Neosteel TMT Bars offer unmatched purity and consistent performance. Our cutting-edge bar rod mills, sourced from Danieli (Italy) and Morgan (USA), ensure that every bar meets global quality standards.

Whether you're building a home, a commercial space, or a structure in an earthquake-prone zone, JSW Neosteel Fe 550D provides the high strength and superior flexibility needed for lasting safety and peace of mind. Choose JSW Neosteel – because every home deserves a pure & strong foundation.



- Highest Level of Purity

Manufactured from iron ore, JSW Neosteel TMT bars have the highest grade of purity and lowest sulphur and phosphorous content, making it strong.



- Consistent Quality

The HYQST technology ensures a uniform quality across the bar. The proof is a perfect ring that can be seen across any cross-section of the bar.



- Best Bonding with cement - Best in Industry / Enhanced ribs

In case of RCC members, the tensile stresses from concrete are transferred to the steel reinforcement bars. The high tensile strength of steel complements the high compressive strength of concrete to result in a stable and safe Reinforced Cement Concrete structure.



Benefits of JSW Neosteel



More Space

The cross sectional area of columns made of Fe 550 TMT rebar is less than that of Fe 500D for the same load bearing design. Hence, the structure based on Fe 550D gives more carpet area.



Time Saving

Lesser time is needed for placing/tying of bars which improves construction efficiency.



Cost Saving

Consumption of TMT rebars is less in Fe 550D based on the same load bearing structure.

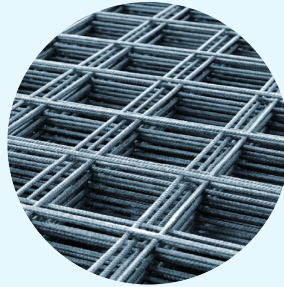


* Actual steel savings will depend on the design, number of floors, seismic zone and other factors to the construction



Earthquake resistance

Higher Strength of Fe 550D TMT provides greater protection from earthquakes



Lower Steel Consumption

Homes designed by JSW Neosteel Fe 550D consume less steel, upto 15%* of steel savings



Strong Structure

Fe 550D based designed structure is capable to bear more load than that based on Fe 500D



Lower Labour Cost

Using less number of bars means using less labour which saves cost

Specifications

JSW Neosteel 550D

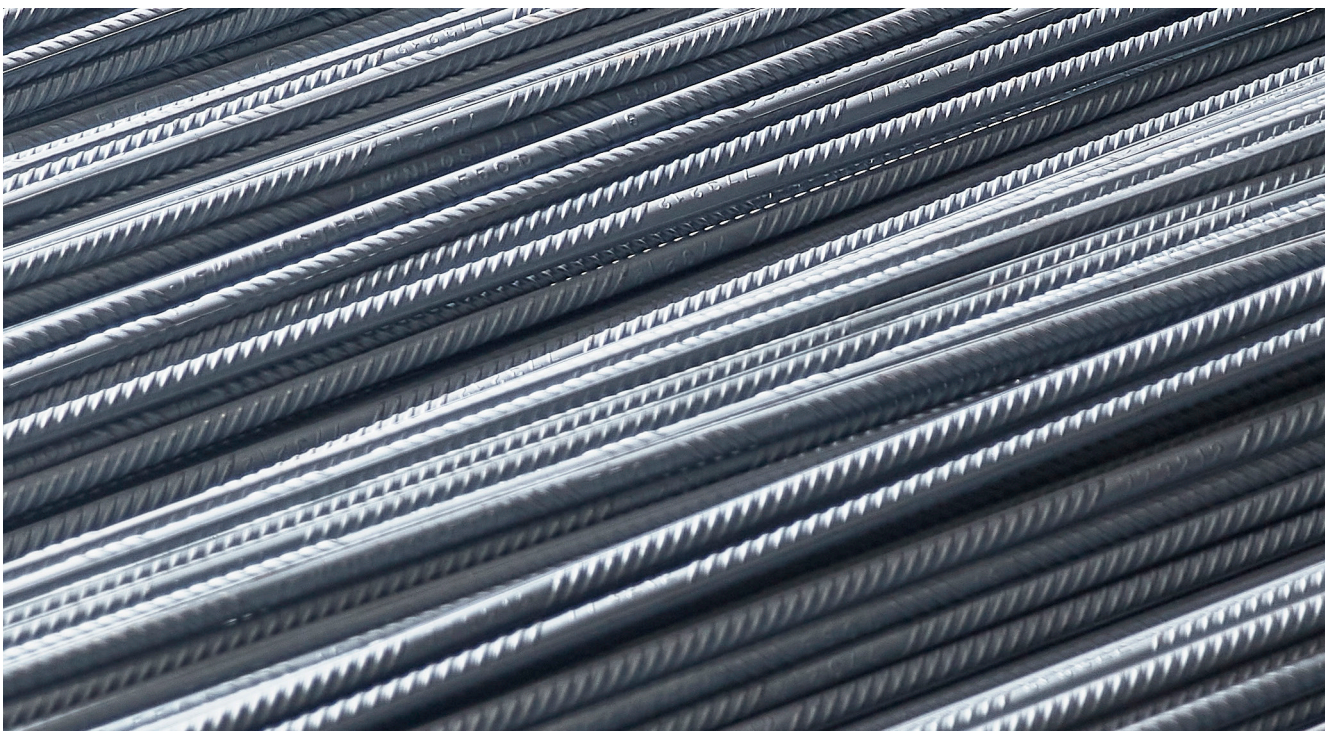
Chemical Composition

Product	%C	%Mn	%Si	%P	%S	CE
IS 1786 Fe 550 D	0.25 max	-	-	0.040 max	0.040 max	0.61 max
JSW Neosteel Fe 550 D	0.25 max	0.75 - 0.90	0.10 - 0.40	0.035 max	0.035 max	0.31-0.38
IS 1786 Fe 550 D EDS	0.25 max	-	-	0.040 max	0.040 max	0.61 max
JSW Neosteel Fe 550 D EDS	0.25 max	0.75 - 1.00	0.35 - 0.45	0.035 max	0.035 max	0.31-0.40

(All CRS Grades , JSW NEOSTEEL Range: Cu : 0.20-0.25%, Cr: 0.45-0.55%)

Mechanical Properties

Product	Yield Strenght N / mm2 (min.)	Tensile Strenght N / mm2 (min.)	UTS / YS Ratio	% El (min.)
IS 1786 Fe 550 D	550	585	1.08 min	14.5
JSW Neosteel Fe 550 D	580	650	1.13 min	16
IS 1786 Fe 550 D EDS	550	585	1.08 min	14.5
JSW Neosteel Fe 550 D EDS	580	650	1.15 min	16



Awards & Recognitions



Steel Sustainability Champion for 7th consecutive year



JSW becomes fastest growing brand in India over the last 10 years - Interbrand



JSW Steel plants (Vijaynagar, Dolvi, Salem and Tarapur) have been awarded the prestigious Responsible Steel certification



Received the Iconic Brands of India 2024 Award from ET NOW





Head Office:

JSW Centre, Bandra Kurla Complex,
Bandra (E), Mumbai - 400 051, India
Tel.: +91 22 42861000 Toll Free : 1800-225-225
www.jswsteel.in



Scan here for website



Scan to watch the video